



cbs E-INVOICE WORLD CLOUD

cbs E-Invoice World Cloud

The Challenge of Complex Regulations

The worldwide legal and fiscal requirements in business-to-government scenarios (for example, e-invoicing, e-governance, e-reporting, e-delivery, and e-tracking) are highly rigorous. It ranges from mandatory electronic invoicing and comprehensive and correct reporting to processing and presenting various special taxes.

Regulatory requirements are also subject to constant changes, sometimes involving effective system and process changes. Companies looking to avoid the considerable technical and organizational effort involved can outsource the process of exchanging documents with the authorities. This makes implementing, using, and maintaining global SAP solutions a costly and complex challenge.



Change Frequency

Frequent changes and high diversity in scope and effort for changes per country.



Criticality

Risk of audits, penalties or freezes in productive processes (e.g. delivery, invoicing).



Complexity

High complex system and interface landscape to support legal requirements.



Supportability

Need for comprehensive legal and technical knowledge to pervade problems.



Cost

High operating, license and external costs.



Resources

High effort of infrastructure and human resources.

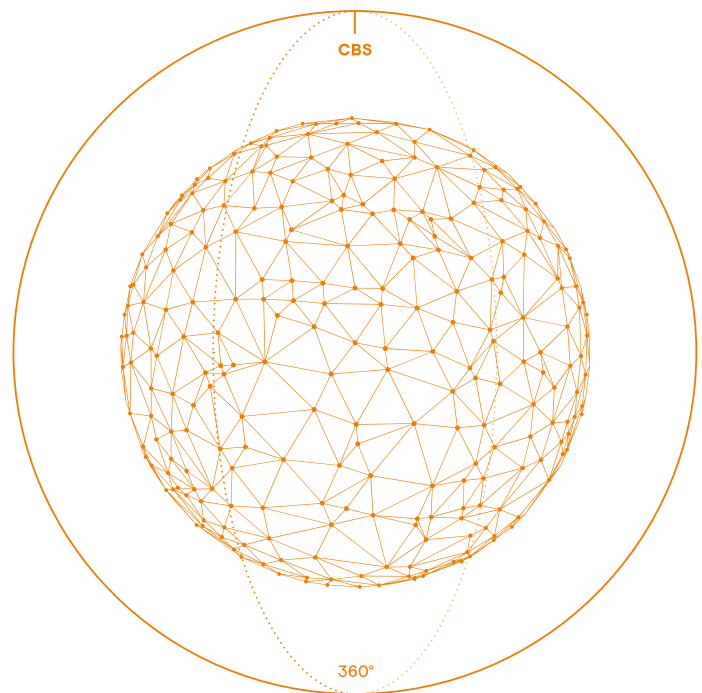


Impact

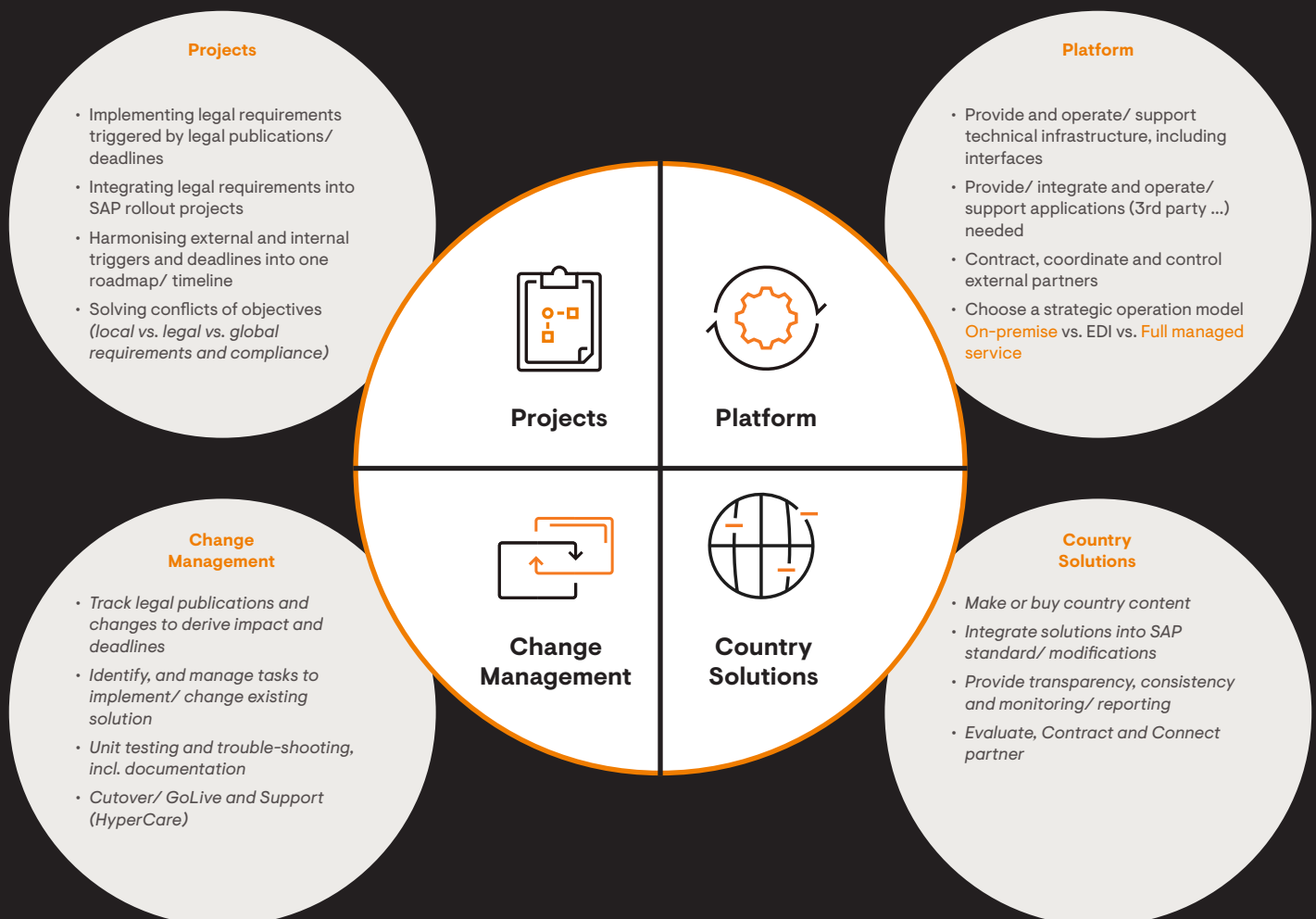
Legal changes have impact on global ERP system and process landscape.

Strategic approach for a moving target

The brutal truth about e-invoicing is that there is no global standard. Each country/ authority is designing, publishing and establishing its solutions. There can't be THE ONE solution, as the target is moving constantly and unpredictably! cbs is the **ONE partner** that offers a comprehensive solution to cover all aspects of e-Invoicing/ e-Compliance.



No matter where or who you are — you need to deal with the following aspects:



cbs E-Invoice World Cloud

ONE Solution

The E-Invoice world cloud is our comprehensive solution to cover all 4 key areas of the electronic compliance requirements for global companies. ONE single solution with ONE interface and full SAP integration to seamlessly integrate legal requirements into your process landscape.

Future Ready

cbs E-Invoice world cloud is the next step in digital process evolution and fills the gap between “classic” EDI and current process implications.



Reduce Complexity

Using the Managed Cloud Solution from cbs, highly reduces Complexity in your SAP System and External Interfaces



Externalize Unplanned & Repetitive Tasks

No longer bother your Central IT Specialists with Local Country Specific Tasks. Reach a new Automation Level for your Business.



Fast ROI / Lower TCO

cbs Cloud Content is Distributed across all the Global Customers and thus reduce the overall Costs per Customer.



Automatic Legal Change Monitoring

Lean back and let the cbs Legal Change Board do the Work. cbs tracks, evaluates and implements Legal Changes automatically.

In 2022,

Over 7.5 million processed messages. >450 Customer entities. 99,99 % availability. Over 20 countries covered across Latin America, Europe and Asia. ISO 27001 certified data center. Highly rated customer satisfaction.

Did you know that:

9 out of 10 organisations are forced to react quickly to legal changes, due to missing transparency and information

... 3 of them won't make it in time

Internal resources and knowledge are bound to organisational changes and projects

... and legal requirements and deadlines don't care for internal schedules or change & release cycles

Most companies suffer from massive efforts or global governance breaches due to missing knowledge of differences between local and legal requirements

... ending up with highly customised solutions that are barely legal but offering high comforts for the local organisation

cbs Customers Around The World



Why cbs Corporate Business Solutions

We are high-performance consultants dedicated to creating global, enterprise-wide, end-2-end digital business processes.

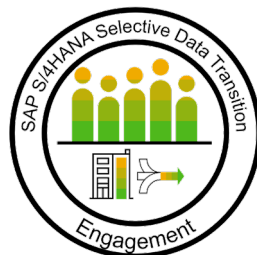
We work for the most amazing customers globally: Renowned, highly innovative enterprises and hidden champions of the international manufacturing, life science and automotive industry.

With our unique Business Transformation Services, we support them on their way to becoming ONE global digital enterprise.

Our solutions lead the market. Driven by passion, we are determined to fulfil our Vision 2025: Being the global champion for the world's market-leading manufacturing companies.



Gold Application Integration
Gold Application Development



Involve Us

Risk-free assessment

cbs will conduct a workshop with experienced transformation consultants covering deployment options and transition approach.

Connect With Us

For free content

Stay up to date with our latest blogs, educational webinars, or project success stories by connecting with us on [LinkedIn!](#)

Ask Us Questions

By email

At sg-office@cbs-consulting.com

Call Us

+65 6727 8920

Our Global Presence

Headquartered in Heidelberg, Germany, we have a presence across the Asia Pacific region. Talk to us from any location regarding your strategic plans.

Offices

Singapore | Malaysia | Japan | China | Germany | Finland | Spain | Austria | Switzerland | America

cbs APAC, Regional Headquarters – Singapore

Level 35, The Gateway West, 150 Beach Road, Singapore 189720

E-Mail sg-office@cbs-consulting.com

Web www.cbs-consulting.com/apac

cbs is part of cbs Corporate Business Solutions Unternehmensberatung GmbH. This document is for general guidance only. As the Company's products and services are continually being developed, it is important for customers to check that the information contained herein includes the latest particulars. Although every precaution has been taken in the preparation of this document, the Company and the publisher accept no responsibility for errors or omissions. The Company and the publisher accept no liability for loss or damages resulting from the use of the information contained herein. This document is not part of a contract or licence save insofar as may be expressly agreed.